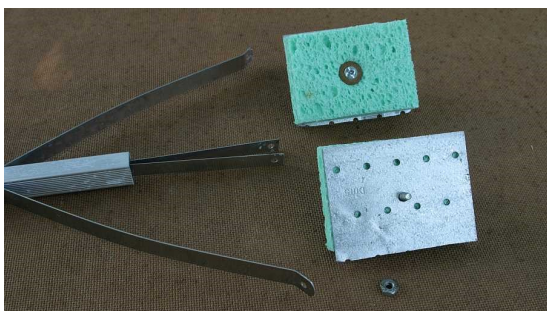


Homemade Weed Wiper

This homemade weed wiper is a very effective tool for applying a post emergence* weed killer to individual weeds without bending over or using a sprayer, which can result in drift damage to non-target plants. This handy device is made from a “grabber tool” used to grab objects that are out of reach.



1. Cut a small sponge in half, and attach the two pieces and a metal plate to the pinchers with a nut, bolt and a couple of washers as shown.
2. Saturate both pieces of sponge with the weed killer solution.



3. Grab the weed at the base and squeeze the handle. Pull the wiper slowly up the full length of each weed being treated.
4. You can also squeeze the sponges against individual leaves to get the product on the leaf surface.



***Post emergence weed control products kill weeds after they have emerged**

Synthetic:

- Glyphosate (Green Light® Com-pleet® Systemic weed and grass killer; Round-Up®)
- Sethoxydion (Hi-Yield® Poast®)
- Fluazifop (Ornamec®; Fusilade®)
- Mecoprop, MCPP, 2,4-dicamba (Green-Light® Wipe-Out®; Trimec® broad leaf weed killer)

Natural/Organic:

- Ammoniated soap of fatty acids (Concem® Fast acting weed killer™)
 - Acetic Acid/ Horticultural grade vinegar (Bumout)
 - Pelargonic acid (Scythe®)
-

The Texas A&M AgriLife Extension Service will provide equal opportunities in programs and activities, education, and employment to all persons regardless of race, color, sex, religion, national origin, age, disability, genetic information, veteran status, sexual orientation or gender identity. The Texas A&M University System, U.S. Department of Agriculture, and the County Commissioners Courts of Texas cooperating.