



McLennan County 4-H Coalition Classic



TEXAS A&M
AGRI LIFE
EXTENSION

- Location: MCC Highlander Ranch
Stay on N.19th street. It will become China Spring Rd.
Turn right at the light on Steinbeck Bend.
Turn left at the light on Rock Creek Rd. and go approximately 3 miles to Cobbs Ln.
Turn right on Cobbs Ln. and go 1/4 mile to entrance of Highlander Ranch on left.

• Date: November 16, 2013

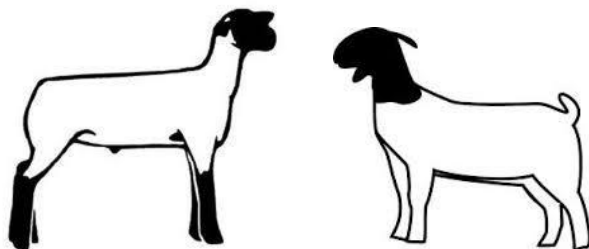
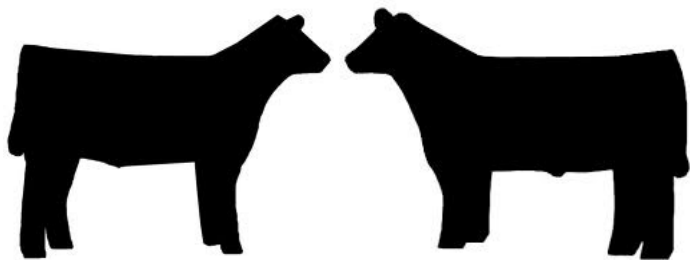
Not a Sanction Show

• Cost: \$20.00 per. Head

JUDGES : Steer & Heifer: Lyle Zoeller

• Weight cards due by 9:30 a.m.

Lamb & Goat: Dustin Coufal



Jackpot Showmanship

\$5.00 @ Gate, Starts @ 9:30 a.m.

(Steer & Heifer will be combined)

Free: Lamb & Goat Pee Wee Show

Heifers and Steers will be allow in the barn the night before starting at 3:35 pm, gate will close @ 8:00 pm

Heifers: American, British, Continental (Show Order)

- Heifers will be broken-up by division
- Heifer cannot be older than January 1, 2011
- No fitting allow, it will be a blow and go show

Steers: American, British, Continental (Show Order)

- At the conclusion of the Heifer Show Steers will follow
- No fitting allow, it will be a blow and go show
- Broken by weight

Lambs: Southdowns, Fine Wool, FWX, Medium Wool (Show Order)

Goats: Light, Medium, Heavy (Show Order)

- At the conclusion of the Lamb Show Goats will follow
- Lambs and Goats will show out of trailers

Buckles to Grand & Reserve

Questions email: djramirez76@gmail.com or nherzog@hot.rr.com or payton.wren@tamu.edu

Extension programs serve people of all ages regardless of socioeconomic level, race, color, sex, religion, disability, or national origin.

The Texas A&M University System, US Department of Agriculture, and the County Commissioners Courts of Texas Cooperating.