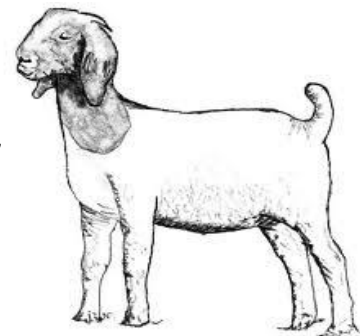


# LAKE TRAVIS FFA



## LAMB & GOAT SHOW

**3<sup>rd</sup> Annual Lake Travis FFA Lamb & Goat Show**  
**Lake Travis High School Ag Science Center**  
**November 1, 2014**  
**Judge – Jonathan Meurin – AST@Giddings HS**

These are **not** sanctioned shows.

Exhibitor Eligibility – Grades 3<sup>rd</sup> – 12<sup>th</sup>

ENTRY FEES - \$ 20.00 (no pre-pays/cash only)

Showmanship \$5 per exhibitor (if you choose to enter Showmanship Category)

Exhibitor **MUST** have shown in a class to participate in showmanship

### Listed below is general information for the Lamb & Goat Shows

- No minimum or maximum weights (Self weigh with a 5 lb weigh back)
- No shearing, clipping, or blow-drying allowed on grounds. Washing & towel drying okay.
- No painting, powdering, or artificial coloring allowed.
- Slick shorn above the knees & hocks.
- Trailer/Cage show. No pens.
- **GOATS**
  - Wethers and Does
  - Halters or collars may be used.
- **LAMBS**
  - Wethers and Ewes.

Concession Stand on site.

### Schedule

**7:00 AM – 9:00 AM** Check-in  
**10:00 AM** Goat Show (5 weight divisions)  
 Sr. Goat Showmanship (9<sup>th</sup> – 12<sup>th</sup> grade)  
 Jr. Goat Showmanship (3<sup>rd</sup> – 8<sup>th</sup> grade)  
*(Goats will release after showing)*  
**30 MINUTE BREAK FOR LUNCH –**  
 Lamb Show (Southdown, Fine Wool, Cross, Medium Wool)  
 Sr. Lamb Showmanship (9<sup>th</sup> – 12<sup>th</sup> grade)  
 Jr. Lamb Showmanship (3<sup>rd</sup> – 8<sup>th</sup> grade)  
*(Lambs will release after showing)*

### Awards

#### Goats

- ❖ Division Champs –
- ❖ Reserve Division Champs –
- ❖ Grand Champion Meat Goat –
- ❖ Reserve Champion Meat Goat –

#### Lambs

- ❖ Breed Champions –
- ❖ Reserve Breed Champions –
- ❖ Grand Champion Lamb –
- ❖ Reserve Champion Lamb –

#### Showmanship (cash payback-%tage of participants)

- ❖ Grand Showmanship (Jr. & Sr. Division) -
- ❖ Reserve Champion (Jr. & Sr. Division) -

The Lake Travis Ag Science Center is located behind the High School. Follow the signs and take the road beside the football stadium, baseball field, and practice stadium.

#### FOR MORE INFORMATION CONTACT:

Lake Travis High School Ag Science Program  
FFA Advisors

Kelly White – [whitek@ltsidschools.org](mailto:whitek@ltsidschools.org) 512-533-6089

Perry White – [whitep@ltsidschools.org](mailto:whitep@ltsidschools.org) 512-533-5921